



Ministry of National Health Services,  
Regulation and Coordination,  
Government of Pakistan



Ministry of National Health Services Regulations and Coordination  
.....



## Weekly Epidemiological Bulletin

# Integrated Disease Surveillance and response system

Islamabad week 47-2024 (18 November -24 November, 2024)

### Highlight

**Table 1: District most frequently suspected cases reported during Epidemiological week-47**

Disease	AD	ILI	B. Diarrhea	Measles	Chick enpox	Viral Hep B C & D	Malaria	Tuberculosis	ALRI < 5 years
CHC Shah Allah Ditta	11	19							
CHC Kirpa	6	132							
CHC Rawat	18	119							
RHC Bhara kahu	18	393							
RHC Tarlai	38	180	02					09	11
RHC Sihala	04	67							
BHU Gagri	07	48							
BHU Bhukhar	10	33							
BHU Bhimber Trar	01	14							
BHU Jagiot	11	09							
BHU Jhang Syedan	09	84							
BHU Chirrah	11	185							
BHU Tumair	05	12							
BHU Pind Begwal	11	06							
BHU Phulgran	20	75							
BHU Shahdara	07	25							
BHU Sohan	09	18							
Humak Dispensary	04	67		01	01				
BHU Golra Sharif	14	21							
BHU Gokina	02	16							
CHC G-13	06	26							5



Ministry of National Health Services,  
Regulation and Coordination,  
Government of Pakistan



Ministry of National Health Services Regulations and Coordination  
.....



**Table 2: Showing week 45-2024 to 47-2024 IDSR –SITUATION REPORT**

S No.		Week 45	Week 46	Week 47
1	Number of sites Reported	21	21	21
2	Influenza like Illness	1223	1401	1549
3	AD (non-Cholera)	260	252	222
4	Bloody Diarrhea	03	01	02
5	Chickenpox/Varicella	0	02	02
6	Malaria	02	01	0
7	ALRI < 5 years	09	15	16
8	Measles	0	01	02
9	Typhoid	0	0	0
10	Dengue	296	194	59



Ministry of National Health Services,  
Regulation and Coordination,  
Government of Pakistan



Ministry of National Health Services Regulations and Coordination  
.....



## Week wise case report of AD & ILI, ICT

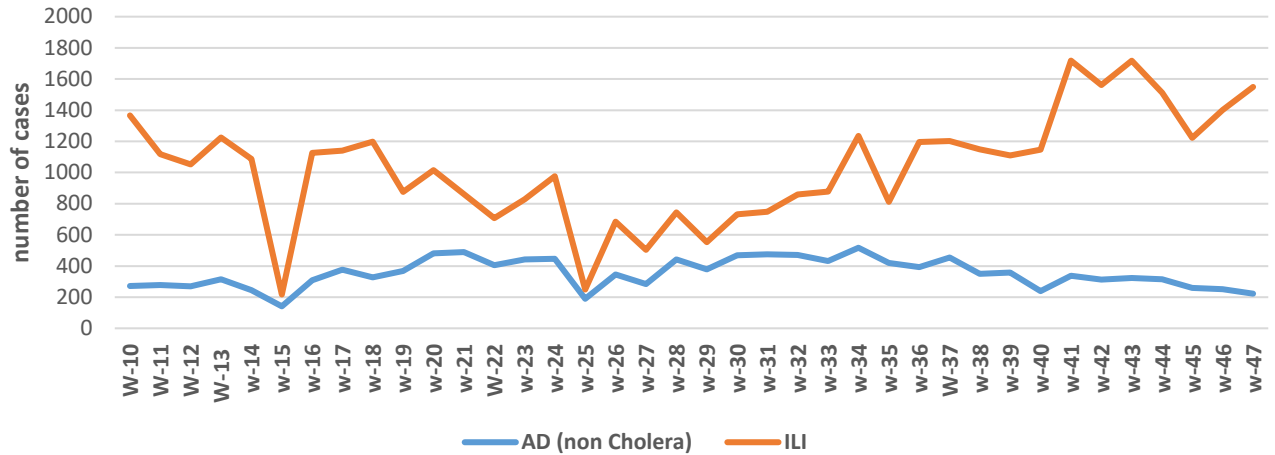


Figure 1: In week 47-2024, disease trends of ILI and acute diarrhea (non-cholera).

## Disease Status for Suspected Cases of Epid-Week 47-2024

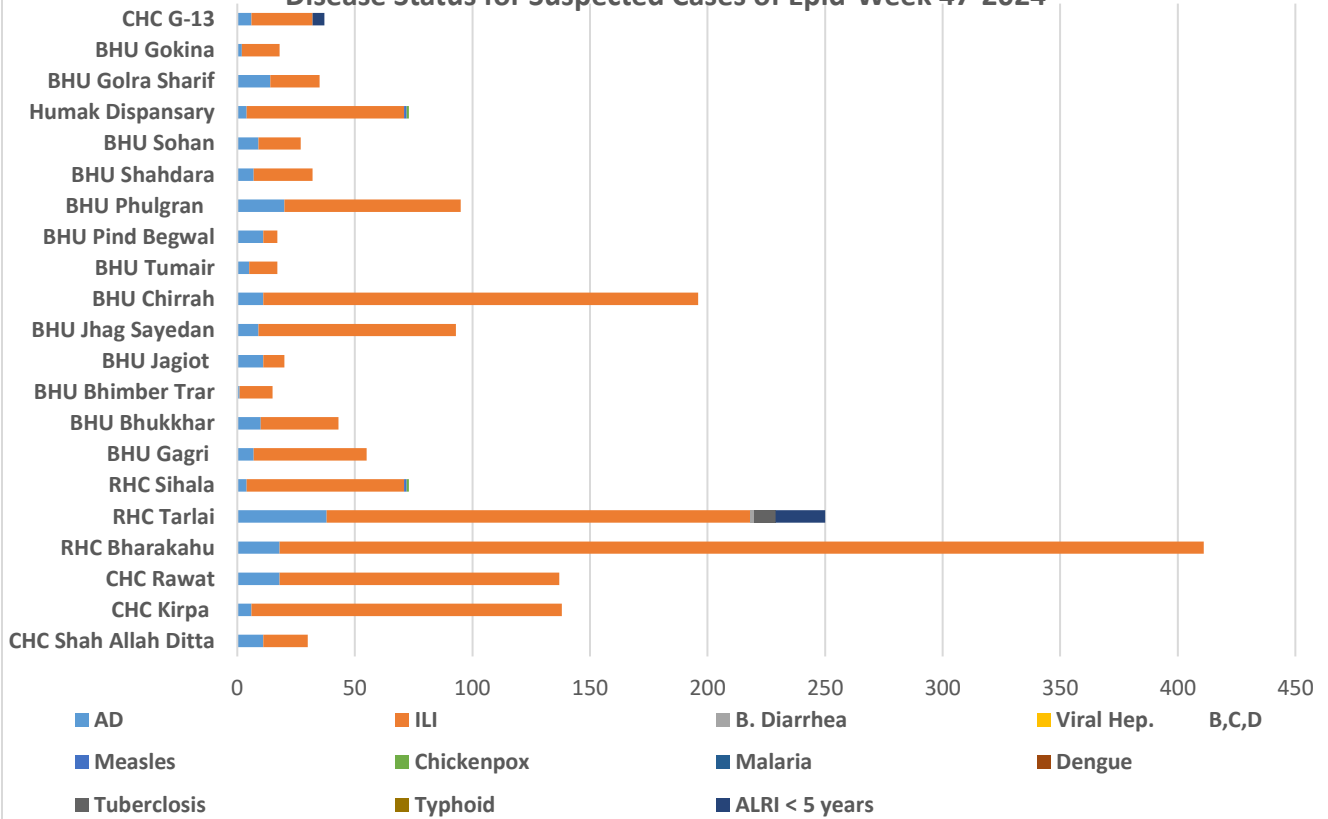


Figure 2: In week 47-2024, ILI has the upper trend with 1549 cases followed by acute diarrhea (non-cholera) 222 cases.



Ministry of National Health Services,  
Regulation and Coordination,  
Government of Pakistan



Ministry of National Health Services Regulations and Coordination



Most frequently reported cases during epid week 37 to 47- 2024



	AD	ILI	B. Diarrhea	Malaria	Measles	Mumps	Chickenpox	Dengue	Tuberculosis	Typhoid	ALRI < 5 years
■ week 37-2024	455	1201	9	2	0	0	2	4	11	0	2
■ week 38-2024	349	1148	2	5	0	0	1	19	13	0	3
■ week 39-2024	358	1110	2	4	0	0	0	91	11	0	4
■ week 40-2024	238	1146	0	1	1	0	0	44	6	0	1
■ week 41-2024	338	1718	0	1	1	1	2	18	18	0	0
■ week 42-2024	312	1561	1	0	3	0	1	10	4	1	2
■ week 43-2024	332	1717	0	3	2	0	1	8	5	1	3
■ week 44-2024	315	1511	0	5	0	0	1	7	5	0	6
■ week 45-2024	260	1223	3	2	0	0	0	6	13	0	9
■ week 46-2024	252	1401	1	1	1	0	2	4	12	0	15
■ week 47-2024	222	1549	2	0	2	0	2	0	9	0	16

■ week 37-2024 ■ week 38-2024 ■ week 39-2024 ■ week 40-2024 ■ week 41-2024 ■ week 42-2024  
 ■ week 43-2024 ■ week 44-2024 ■ week 45-2024 ■ week 46-2024 ■ week 47-2024

Figure 3: There is decrease in number of AD (non-Cholera) & decrease in ILI cases week 47-2024.

## COVID highlight

### Sampling Reports Nov 18<sup>th</sup> to 24<sup>th</sup> Nov. 2024

Total Positive	Total Negative	Total Pending	Total Sample Taken
0	10	0	10

Table 3: Showing 0 % positivity rate during epidemiological week 47-2024.



Ministry of National Health Services,  
Regulation and Coordination,  
Government of Pakistan



Ministry of National Health Services Regulations and Coordination  
.....



## Expanded Program on Immunization activities of Health Department ICT

EPI in Pakistan is coordinated at Federal Directorate of Immunization under the Ministry of National Health Services and Regulation Coordination (NHSR&C). The EPI program shall be including vaccines for prevention of vaccine preventable diseases among the adolescents and older age groups as the evidence of vaccines' effectiveness is acquired and advised by the NITAG. The immunization schedule shall thus be periodically updated as and when required depending upon the local disease burden and requirements. The health department with an objective to improve the health of all works on prevention of the diseases EPI is one of the major components. The EPI at district level is managed and supported by staff at district level and the EPI services are provided at Union council level through Fixed Centers, Outreach Vaccination sites and mobile if applicable.

Total EPI Coverage Antigen wise coverage in ICT rural during week 47-2024

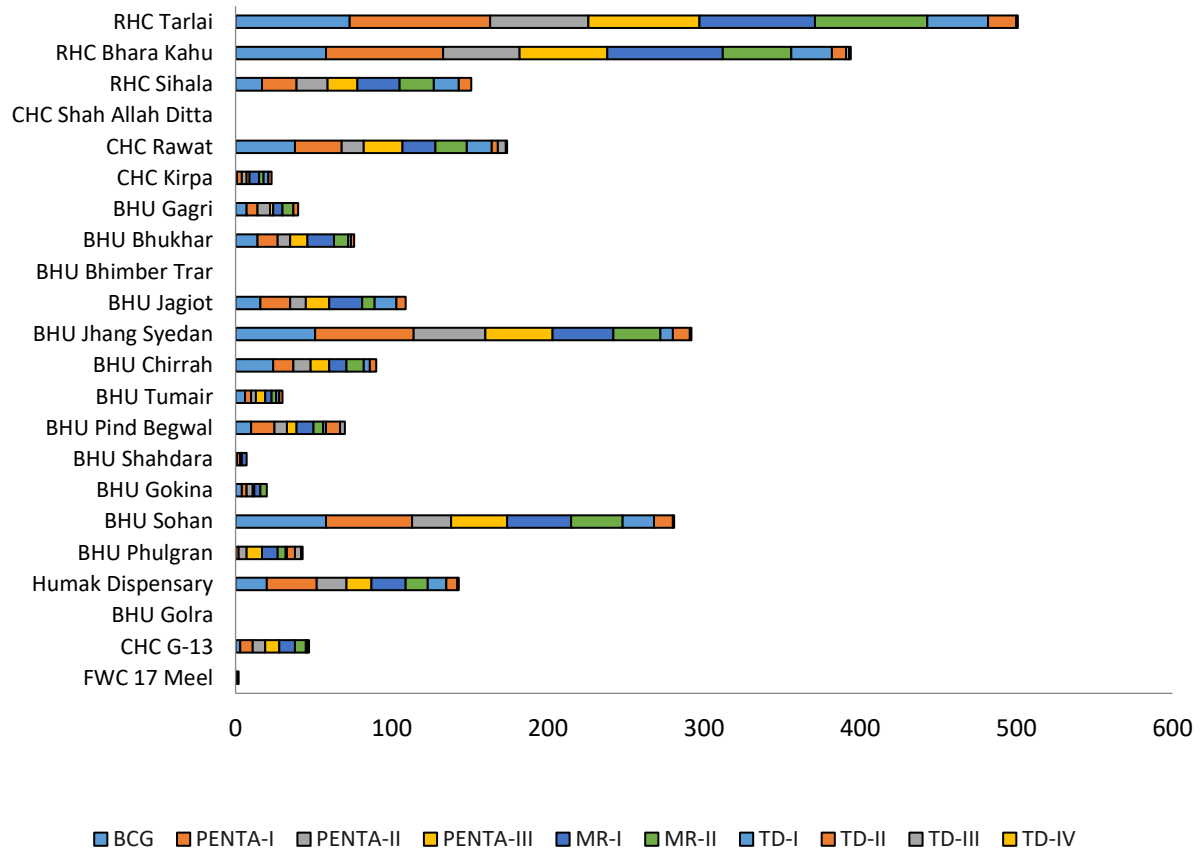


Figure 4: In week 47-2024, total coverage vaccine wise. BCG 315, Penta I 338, Penta II 292, Penta III 274, MR I 259, MR II 243, TD-I 132, TD-II 63, TD-III 09 and TD-IV-V 04.



Ministry of National Health Services,  
Regulation and Coordination,  
Government of Pakistan



Ministry of National Health Services Regulations and Coordination



WHO

### Total EPI Coverage in ICT rural during week 47-2024

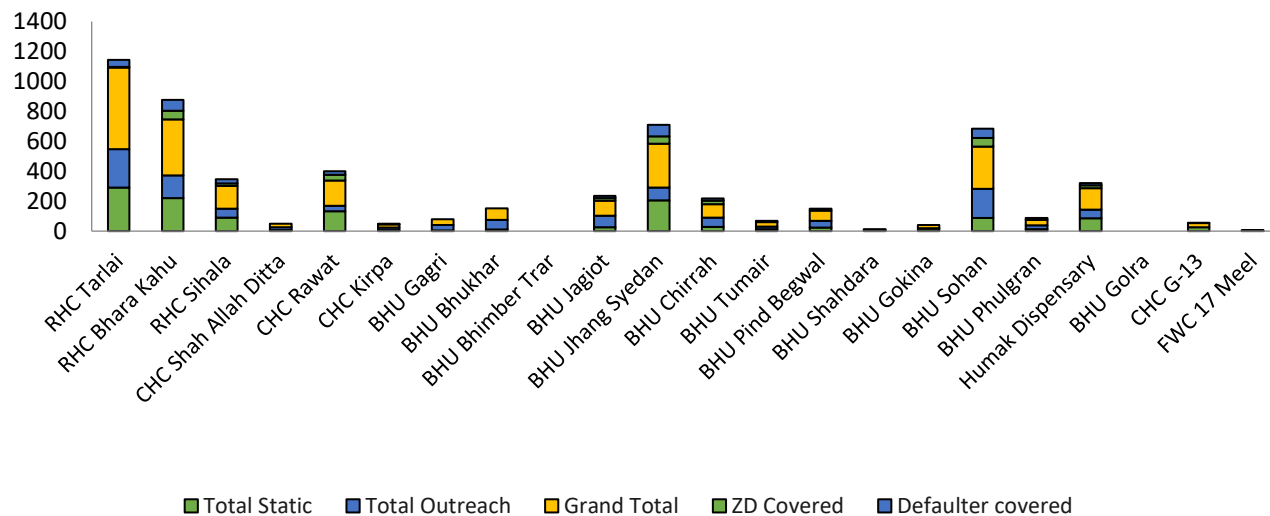


Figure 5: In week 47-2024, Total static coverage was 1142, Outreach total was 1098 Zero dose covered were 201, and defaulter covered were 311.

### Total EPI coverage of Private sector hospitals antigen wise- Week 47-2024

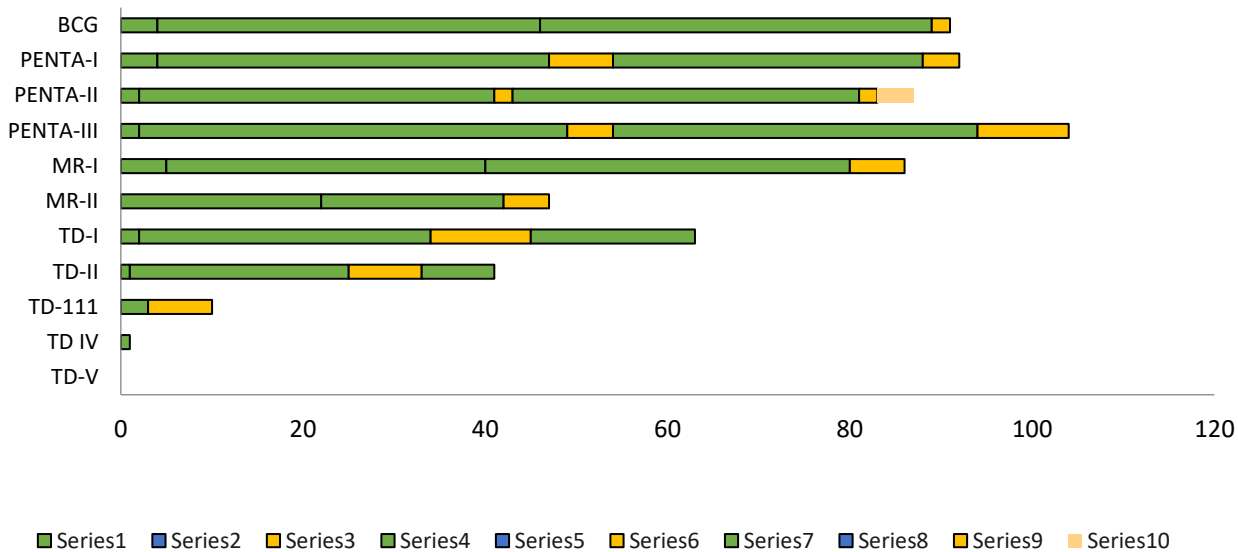


Figure 6: There is vaccine coverage of Public private partnership with private hospitals. In week 47-2024 a total of 405 doses of different antigen were given by hospitals in private sector.



Ministry of National Health Services,  
Regulation and Coordination,  
Government of Pakistan



Ministry of National Health Services Regulation and Coordination



# Dengue Situation Report



## OFFICE OF THE DISTRICT HEALTH OFFICER ISLAMABAD, ICT ACTIVITY REPORT OF DENGUE POSITIVE CASES, ADMITTED IN ISLAMABAD RELEASED ON 20 NOVEMBER 2024 (DATA FROM 1 JANUARY TO 20 NOVEMBER 2024, 3:00 PM)

### A. Patients Count

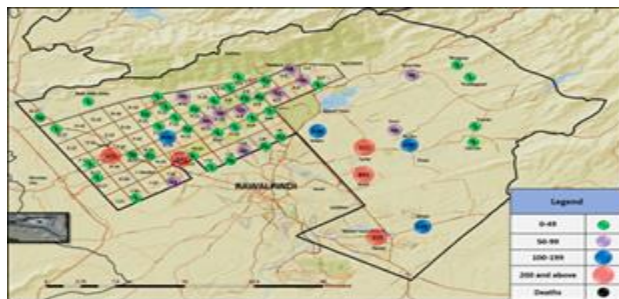
New Patients in Last 24 Hour	Rural Area Patients		Urban Area Patients		Total Patients in Islamabad	Registration of patients from other districts in ISB	Wrong address, Number & duplicate
	Last 24 Hour	Total cases	Last 24 Hour	Total cases			
19	15	2435	4	1417	3852	205	65

### B. Hospital Admission

S. No	Name of Hospital	Last 24-Hour Patients	Total Patients	Deaths	
				Number	UC/Sector
1	PAKISTAN INSTITUTE OF MEDICAL SCIENCES (PIMS)	0	212	0	
2	FG POLY CLINIC HOSPITAL	0	92	0	
3	CAPITAL HOSPITAL	1	78	0	
4	FEDERAL GENERAL HOSPITAL	0	129	0	
5	B.B HOSPITAL (RWP)	4	382	0	
6	HOLY FAMILY HOSPITAL (RWP)	9	1026	0	
7	DHQ HOSPITALS (RWP)	0	4	0	
8	PRIVATE LABORATORY/Others	5	1929	0	
Total		19	3852	0	

### C. Response by Teams

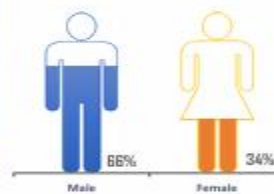
Rural				Urban									
Cases response in rural			Action taken in rural limits			Case response in urban			Action taken in urban limits				
Total cases	Responded in 24 Hr	Total case responded	IRS 24 Hour	Total IRS	Fogging 24 Hour	Total Fogging	Total cases	Responded in 24 Hr	Total case responded	IRS 24 Hour	Total IRS	Fogging 24 Hour	Total Fogging
2435	17	2392	220	30675	0	8530	1417	8	1326	124	27131	0	8005



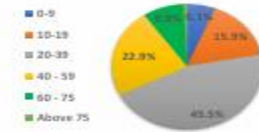
Dengue trend in Islamabad



### Affected Gender



### Affected Age Group



### Weekwise Dengue Cases in Islamabad 2024





Ministry of National Health Services,  
Regulation and Coordination,  
Government of Pakistan



Ministry of National Health Services Regulations and Coordination  
.....



## Chikungunya Surveillance Pictures

