

Weekly Epidemiological Bulletin

Integrated Disease Surveillance and response system

Islamabad week 45-2024 (04 October -10 November, 2024)

Highlight

Table 1: District most frequently suspected cases reported during Epidemiological week-45

Disease	AD	ILI	B. Diarrhea	Measles	Chick enpox	Viral Hep B C & D	Malaria	Tuberculosis	ALRI < 5 years
CHC Shah Allah Ditta	15	20							
CHC Kirpa	10	88							
CHC Rawat	26	121							
RHC Bhara kahu	18	271				1			
RHC Tarlai	22	185	2						7
RHC Sihala	30	149					2		
BHU Gagri	8	52							
BHU Bhukhar	18	22							
BHU Bhimber Trar	04	29							
BHU Jagiot	09	03							
BHU Jhang Syedan	05	42							
BHU Chirrah	06	71							
BHU Tumair	06	05							
BHU Pind Begwal	10	13	1						
BHU Phulgran	13	21							
BHU Shahdara	0	15							
BHU Sohan	22	16							
Humak Dispensary	05	35							
BHU Golra Sharif	27	34							
BHU Gokina	01	10							
CHC G-13	05	11							

Table 2: Showing week 43-2024 to 45-2024 IDSR –SITUATION REPORT

S No.		Week 43	Week 44	Week 44
1	Number of sites Reported	21	21	21
2	Influenza like Illness	1717	1511	1223
3	AD (non-Cholera)	332	315	260
4	Bloody Diarrhea	0	0	3
5	Chickenpox/Varicella	01	01	0
6	Malaria	03	05	02
7	ALRI < 5 years	03	06	09
8	Measles	02	0	0
9	Typhoid	01	0	0
10	Dengue	427	413	296

Week wise case report of AD & ILI, ICT

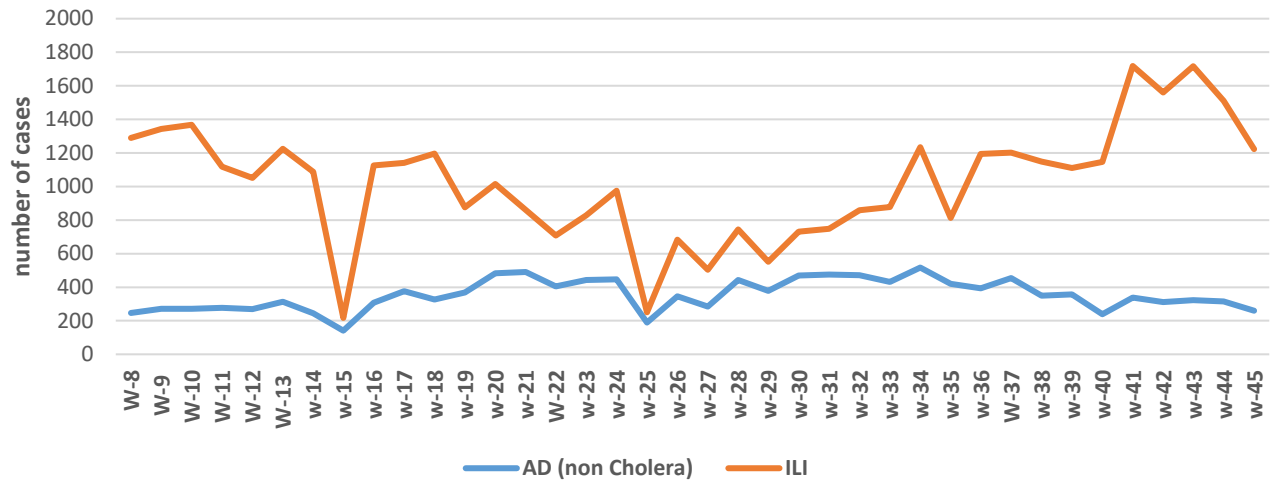


Figure 1: In week 45-2024, disease trends of ILI and acute diarrhea (non-cholera).

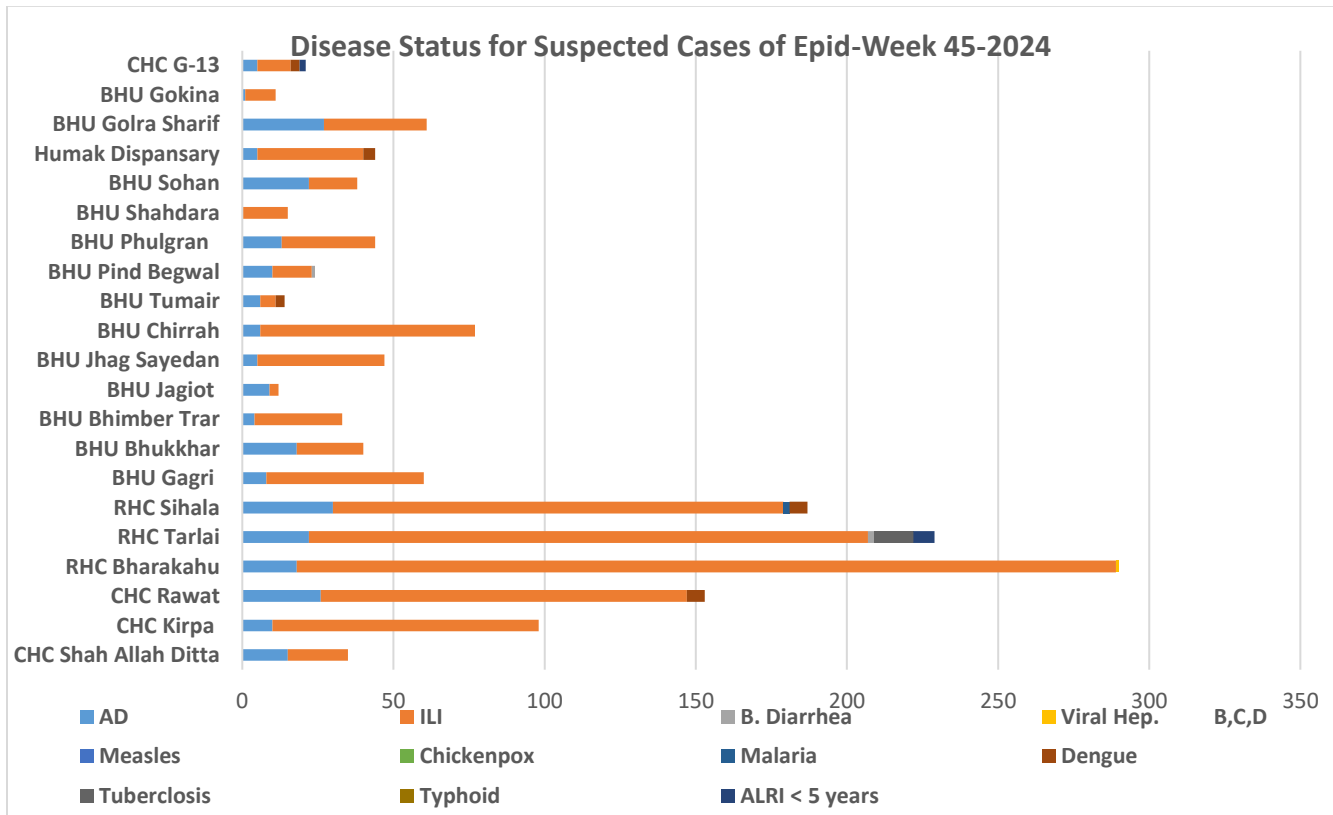


Figure 2: In week 45-2024, ILI has the upper trend with 1223 cases followed by acute diarrhea (non-cholera) 260 cases.

Most frequently reported cases during epid week 35 to 45- 2024

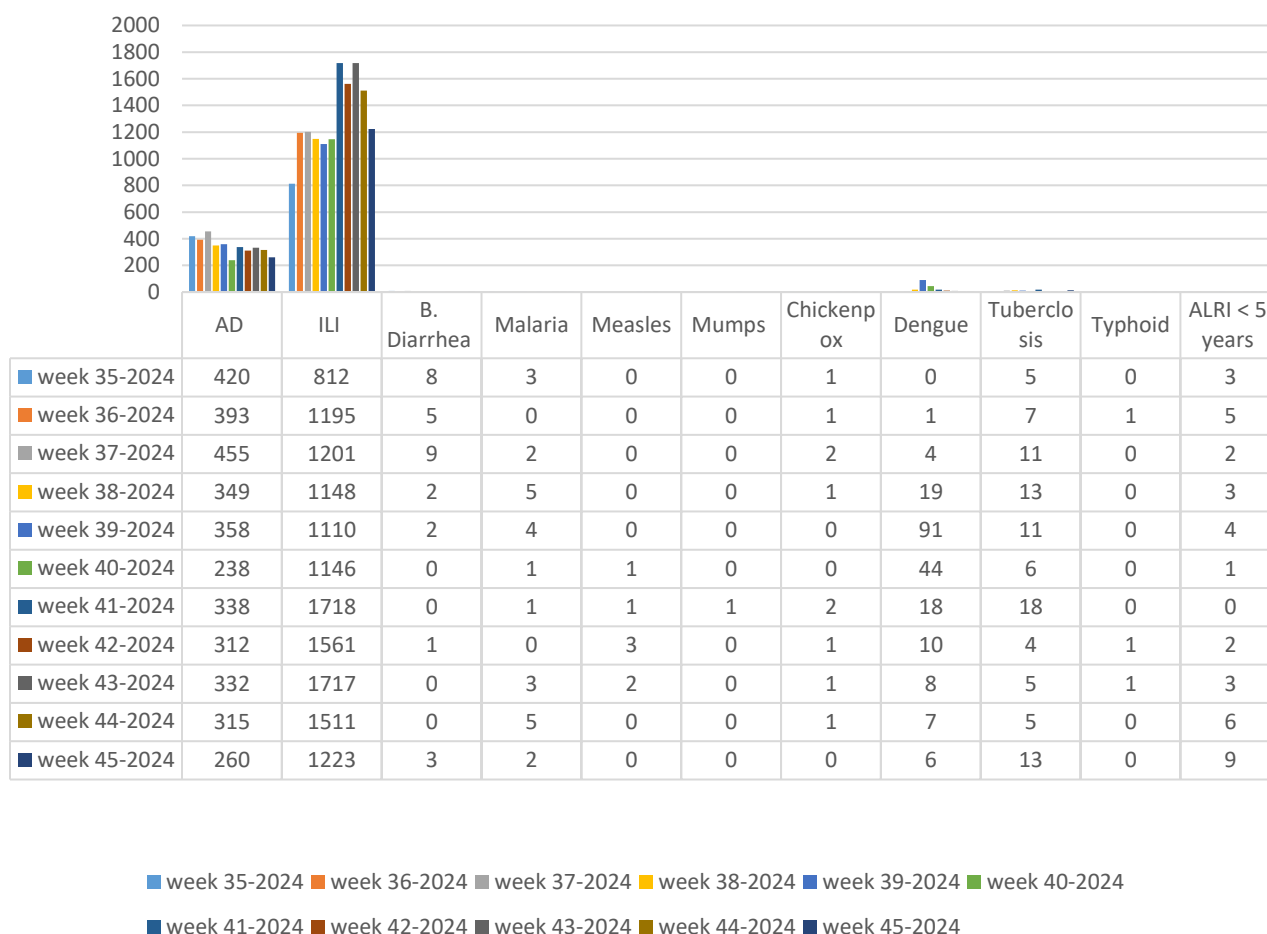


Figure 3: There is decrease in number of AD (non-Cholera) & decrease in ILI cases week 45-2024.

COVID highlight

Sampling Reports Oct 04th to 10rd Nov. 2024

Total Positive	Total Negative	Total Pending	Total Sample Taken
0	0	0	0

Table 3: Showing 0 % positivity rate during epidemiological week 45-2024.

Expanded Program on Immunization activities of Health Department ICT

EPI in Pakistan is coordinated at Federal Directorate of Immunization under the Ministry of National Health Services and Regulation Coordination (NHSR&C). The EPI program shall be including vaccines for prevention of vaccine preventable diseases among the adolescents and older age groups as the evidence of vaccines' effectiveness is acquired and advised by the NITAG. The immunization schedule shall thus be periodically updated as and when required depending upon the local disease burden and requirements. The health department with an objective to improve the health of all works on prevention of the diseases EPI is one of the major components. The EPI at district level is managed and supported by staff at district level and the EPI services are provided at Union council level through Fixed Centers, Outreach Vaccination sites and mobile if applicable.

Total EPI Coverage Antigen wise coverage in ICT rural during week 45-2024

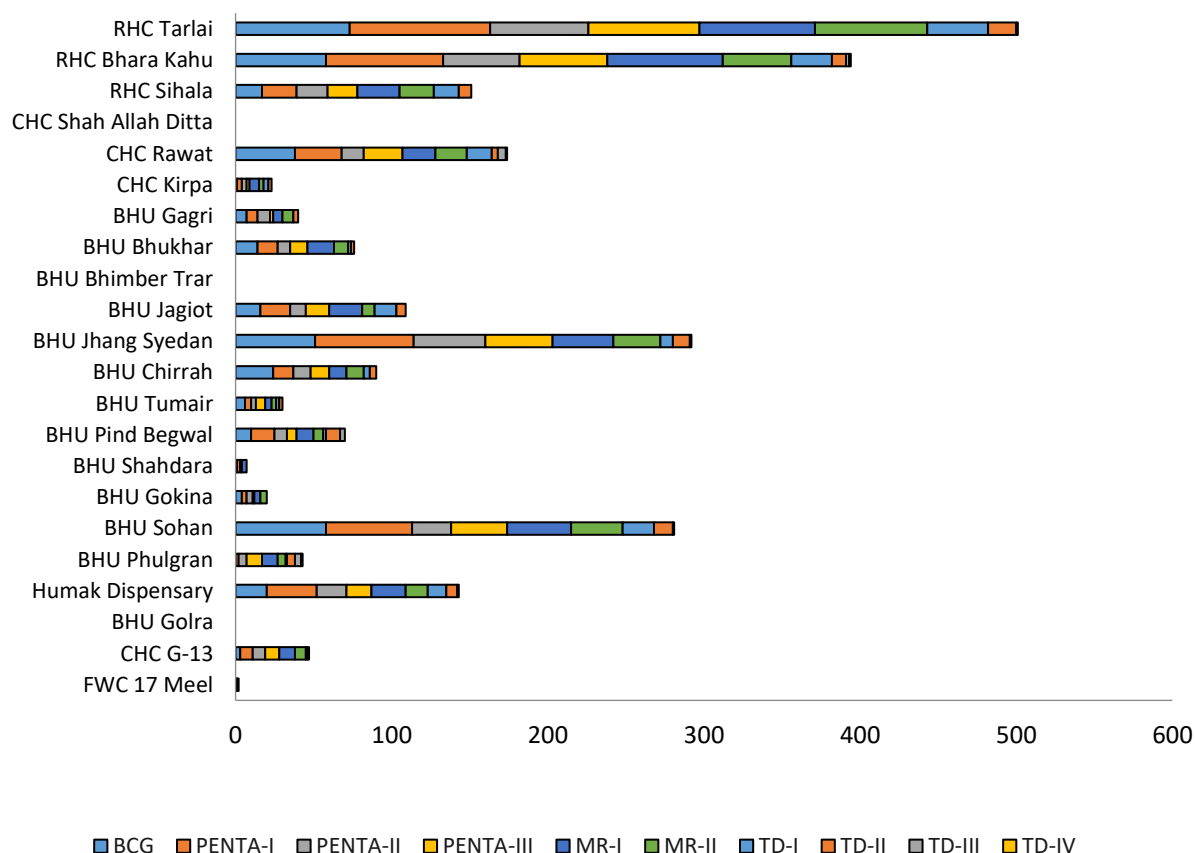


Figure 4: In week 45-2024, total coverage vaccine wise. BCG 359, Penta I 379, Penta II 312, Penta III 310, MR I 284, MR II 272, TD-I 169, TD-II 86, TD-III 19 and TD-IV-V 06.

Total EPI Coverage in ICT rural during week 45-2024

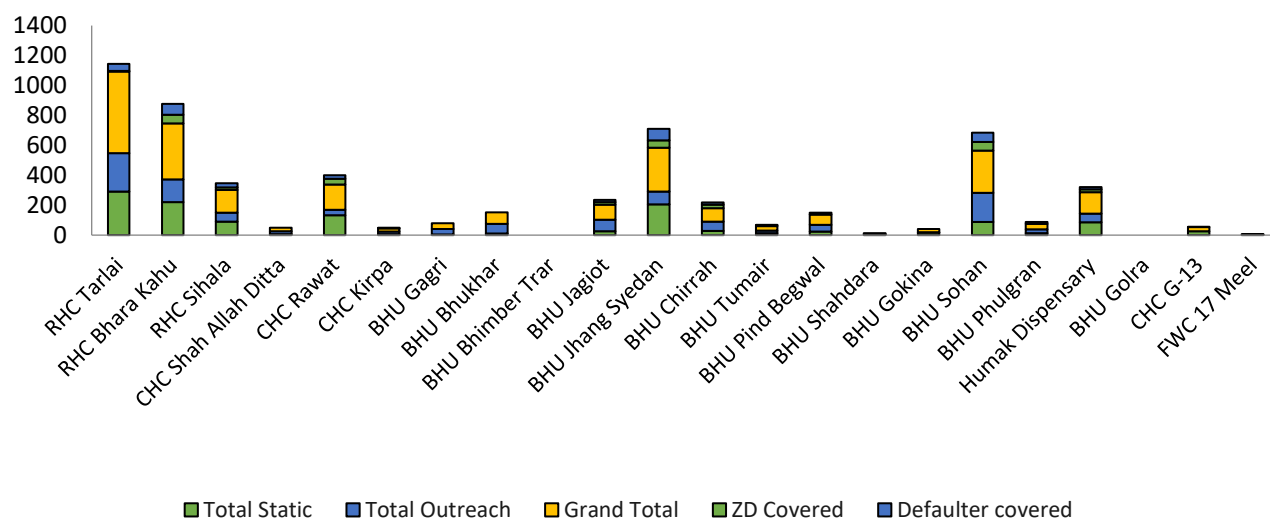


Figure 5: In week 45-2024, Total static coverage was 1152, Outreach total was 1198 Zero dose covered were 222, and defaulter covered were 338.

Total EPI coverage of Private sector hospitals antigen wise- Week 45-2024

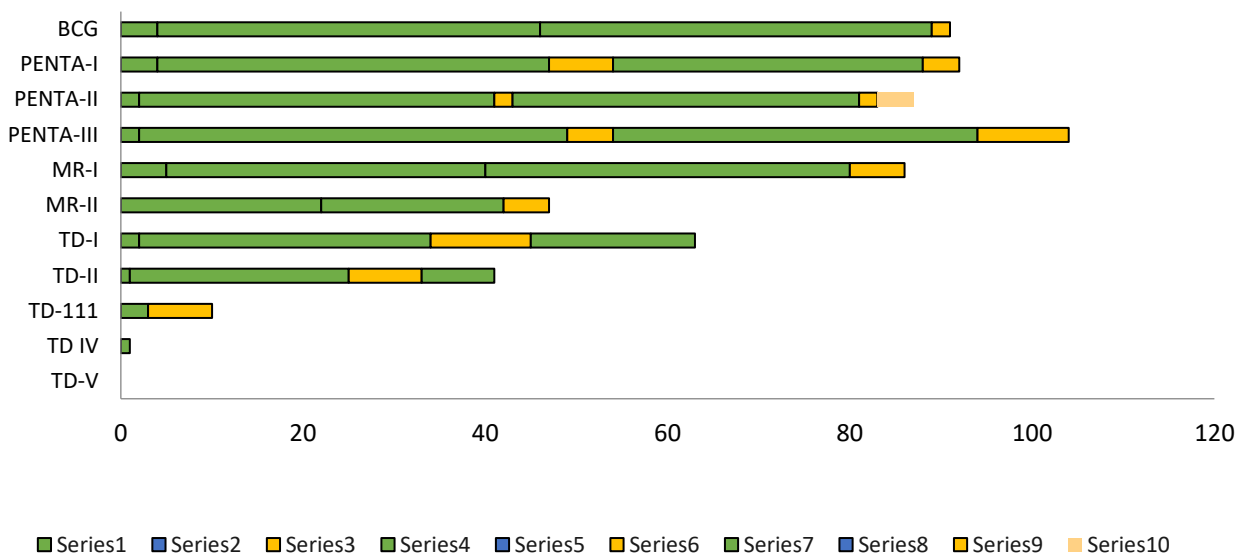


Figure 6: There is vaccine coverage of Public private partnership with private hospitals. In week 45-2024 a total of 426 doses of different antigen were given by hospitals in private sector.



Ministry of National Health Services,
Regulation and Coordination,
Government of Pakistan



Ministry of National Health Services Regulation and Coordination
.....



Dengue Situation Report



OFFICE OF THE DISTRICT HEALTH OFFICER ISLAMABAD, ICT ACTIVITY REPORT OF DENGUE POSITIVE CASES, ADMITTED IN ISLAMABAD RELEASED ON 14 NOVEMBER 2024 (DATA FROM 1 JANUARY TO 14 NOVEMBER 2024, 3:00 PM)

A. Patients Count

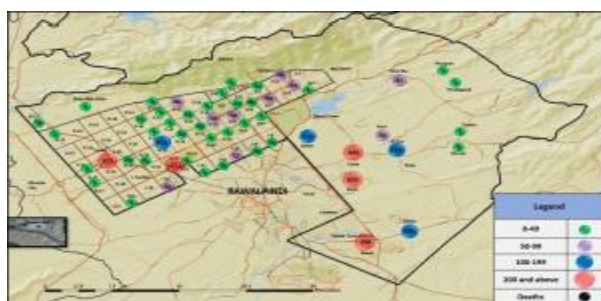
New Patients in Last 24 Hour	Rural Area Patients		Urban Area Patients		Total Patients in Islamabad	Registration of patients from other districts in ISB	Wrong address, Number & duplicate
	Last 24 Hour	Total cases	Last 24 Hour	Total cases			
23	13	2340	10	1372	3712	199	64

B. Hospital Admission

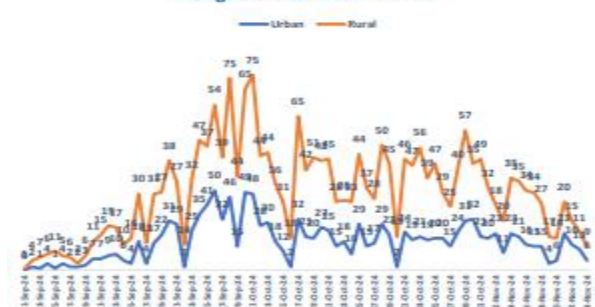
S. No	Name of Hospital	Last 24-Hour Patients	Total Patients	Deaths	
				Number	UC/Sector
1	PAKISTAN INSTITUTE OF MEDICAL SCIENCES (PIMS)	0	210	0	
2	FG POLY CLINIC HOSPITAL	0	92	0	
3	CAPITAL HOSPITAL	3	75	0	
4	FEDERAL GENERAL HOSPITAL	0	114	0	
5	B.B HOSPITAL (RWP)	2	359	0	
6	HOLY FAMILY HOSPITAL (RWP)	8	979	0	
7	DHQ HOSPITALS (RWP)	0	4	0	
8	PRIVATE LABORATORY/Others	10	1879	0	
Total		23	3712	0	

C. Response by Teams

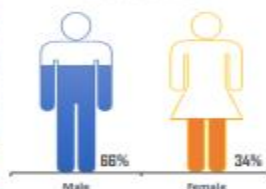
Rural						Urban					
Cases response in rural			Action taken in rural limits			Case response in urban			Action taken in urban limits		
Total cases	Responded in 24 Hr	Total case responded	IRS 24 Hour	Total IRS	Fogging 24 Hour	Total Fogging	Total cases	Responded in 24 Hr	Total case responded	IRS 24 Hour	Total IRS
2340	27	2311	527	29859	465	8530	1372	14	1279	195	26362
										106	8005



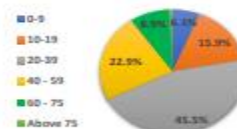
Dengue trend in Islamabad



Affected Gender



Affected Age Group



Weekwise Dengue Cases in Islamabad 2024



Current week





Ministry of National Health Services,
Regulation and Coordination,
Government of Pakistan



Ministry of National Health Services Regulations and Coordination



Dengue Surveillance Pictures

